

AT&T -
Kyle Humble 918-596-4240

ONG
Jonathan Meadows 918-831-8215

East Central OK Elec. Co. -
Steve Beam 918-756-0873

Level 3 Communications -
Clinton Gray 918-547-3757

Sprint Fiber Optic -
Wick Jenkins 918-622-9483

NOTE:
ALL UTILITY LOCATIONS
ARE APPROXIMATE.

LEGEND

⊕ BENCHMARK

▭ PROPOSED ASPH. SURFACING

GRAPHIC SCALE
(HORIZ.)
1 inch = 20' ft.
0 20' 40'

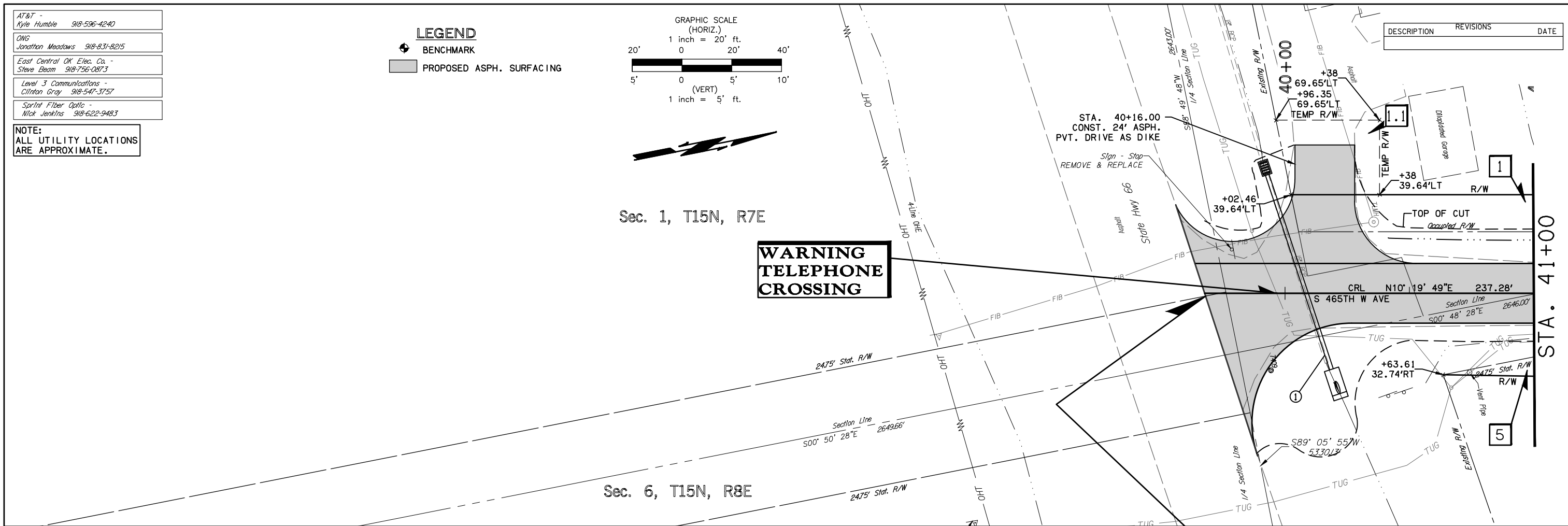
(VERT.)
1 inch = 5' ft.
5' 0 5' 10'

Sec. 1, T15N, R7E

**WARNING
TELEPHONE
CROSSING**

Sec. 6, T15N, R8E

DESCRIPTION	REVISIONS	DATE

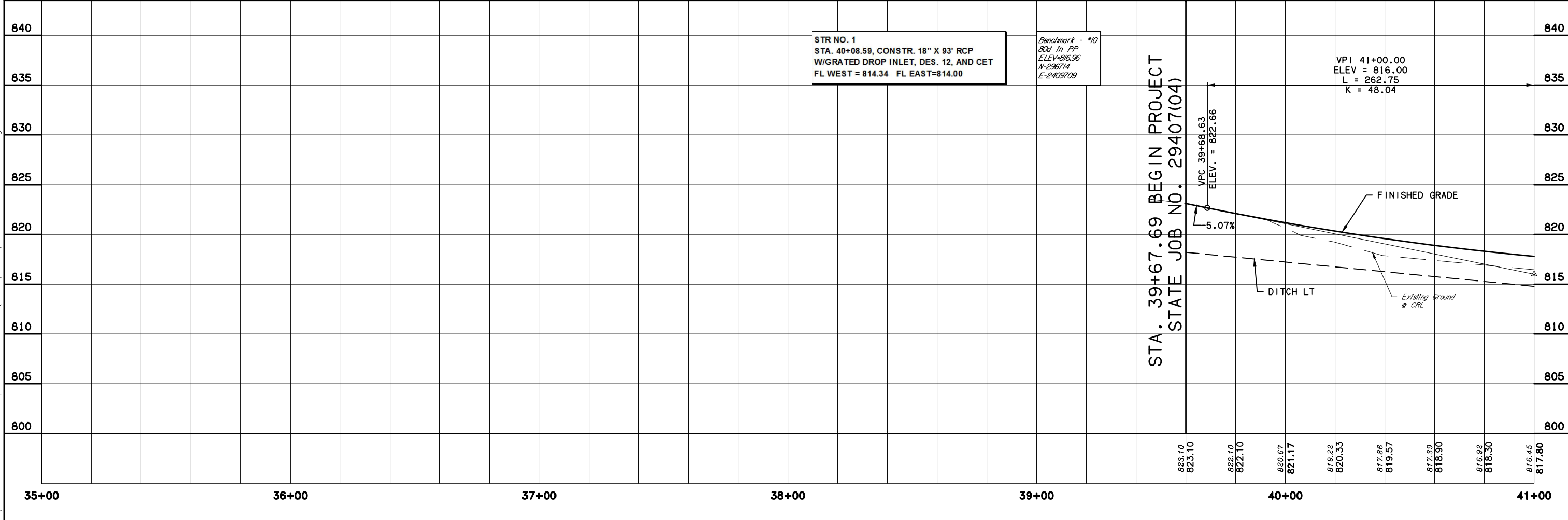


STR NO. 1
STA. 40+08.59, CONSTR. 18" X 93' RCP
W/GRATED DROP INLET, DES. 12, AND CET
FL WEST = 814.34 FL EAST=814.00

Benchmark - *10
80d In PP
ELEV=816.96
N=296714
E=2409709

VPI 41+00.00
ELEV = 816.00
L = 262.75
K = 48.04

STA. 39+67.69 BEGIN PROJECT
STATE JOB NO. 29407(04)



Friday, July 28, 2017 10:18:29 AM
W:\13-850 Br.181A Little Deep Fork Ck- Creek 3\CIV3D\PLANS\850-PLAN AND PROFILE.dwg